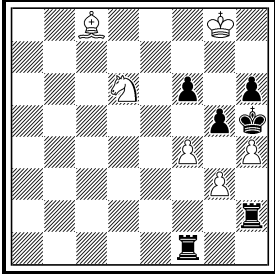


Problemschach für Tiger

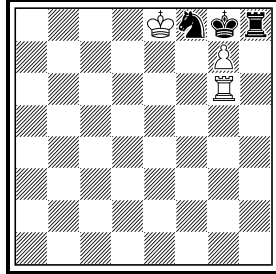
Tiger- und Karnickel-Tests der Jahre 2016 und 2017

Mai 2016
Tiger-Test



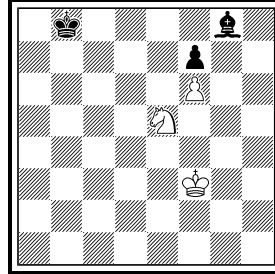
Weiß gewinnt (6+6)

Juni 2016
Karnickel-Test



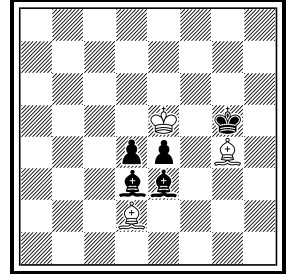
Matt in 1 Zug (3+3)

Juni 2016
Tiger-Test



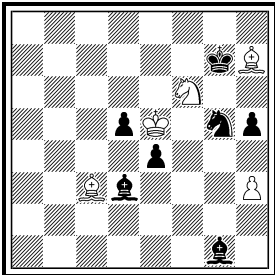
Weiß gewinnt (3+3)

August 2016
Karnickel-Test



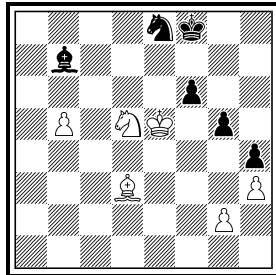
Bester weißer (3+5)
Zug?

August 2016
Tiger-Test



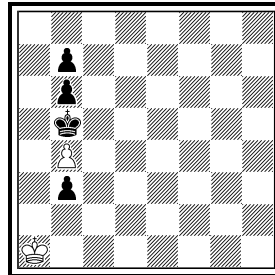
Weiß hält remis (5+7)

Oktober 2016
Karnickel-Test



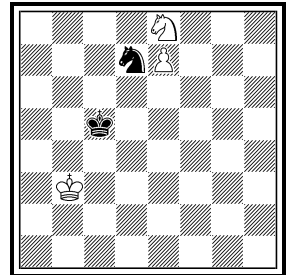
Schlechtester (6+6)
weißer Zug?

Oktober 2016
Tiger-Test



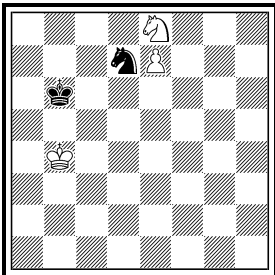
Hilfsmatt in 6 (2+4)
Zügen

Dezember 2016
Karnickel-Test



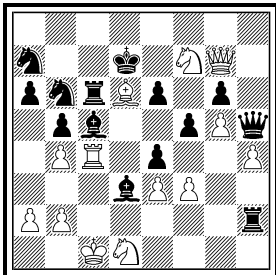
Weiß gewinnt (3+2)

Dezember 2016
Tiger-Test



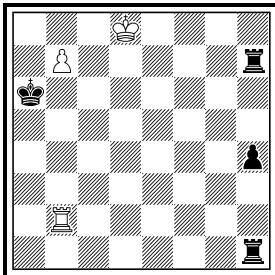
Weiß gewinnt (3+2)

Januar 2017
Kombinierter Test



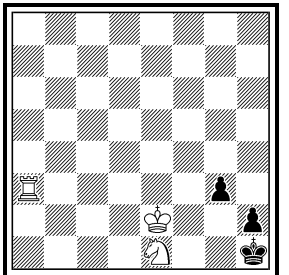
Weiß erzwang (13+14)
Patt

März 2017
Tiger-Test



Weiß hält remis (3+4)

Mai 2017
Tiger-Test



Matt in 3 Zügen (3+3)